



FROM 2010 TO 2011

38% INCREASE
in people coming through the door

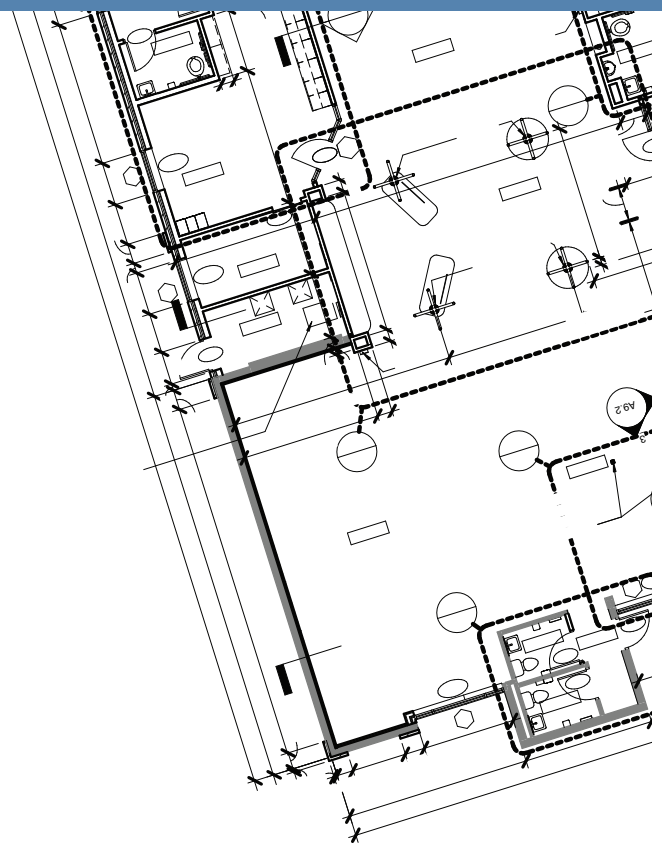
58% INCREASE
of items checked out

OUR CUSTOMERS SAID...

- MORE TECHNOLOGY**
- BIGGER SPACES**
- LONGER HOURS**



**YOUR LIBRARY is
EXPANDING**



YOUR NEW LIBRARY WILL FEATURE

- **Double the space**, with an additional 2,400 sq ft - total of **5,000 sq ft** when completed
- **Expanded hours** and **enhanced services**
- A **meeting room** and **additional computers**
- **An area that promotes the rich history of Eastover**

- **Architect: CDA Architects**
- **Cost: \$1.6 million**
(USDA Grant and matching funds from Richland County)
- **First LEED certified county-owned/municipal building**

During construction:

- Library hours will remain the same with all services (Wi-Fi, classes and book returns)

